

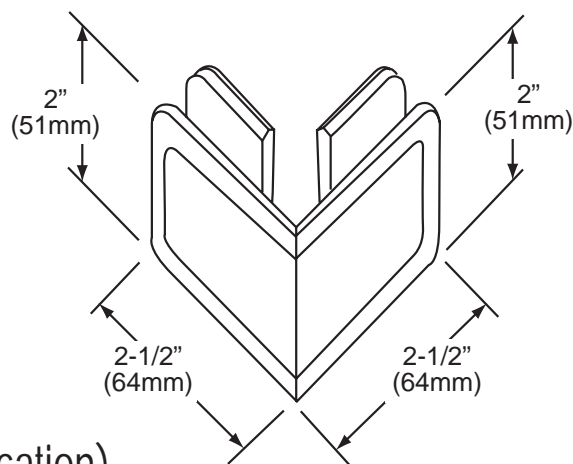


**C.R. LAURENCE CO., INC.**  
PROFESSIONAL QUALITY

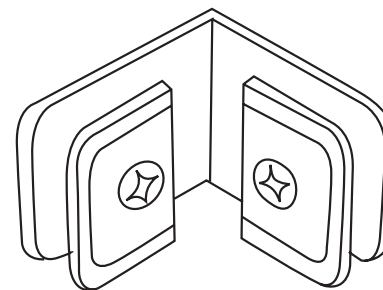
## HEAVY DUTY GLASS CLAMPS

90° Glass Clamp  
(Glass-to-Glass Application)

CAT. No.BGC90



FRONT VIEW



REAR VIEW

## Specifications:

**Material:** Solid brass

**Glass Thickness Range:** 3/8"(10mm) to 1/2"(12mm)

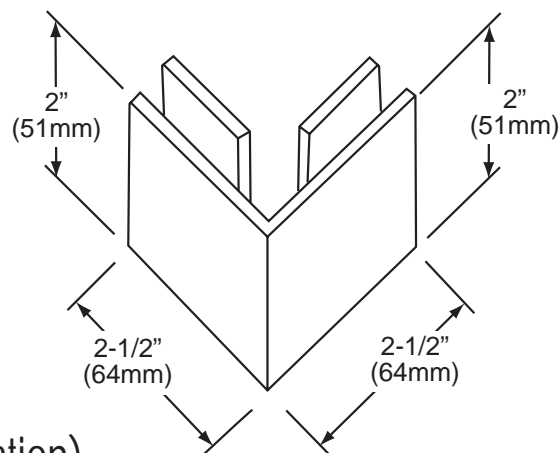
**Hole Size Required:** 3/4" (19mm)

**Includes:** Mounting screws and gaskets

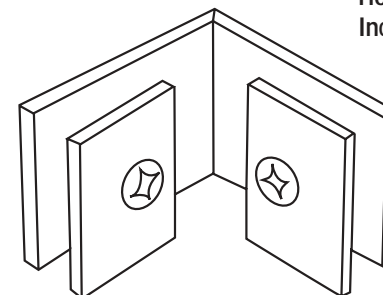
## HEAVY DUTY GLASS CLAMPS

90° Glass Clamp  
(Glass-to-Glass Application)

CAT. No.SGC90



FRONT VIEW



REAR VIEW

## Specifications:

**Material:** Solid brass

**Glass Thickness Range:** 3/8"(10mm) to 1/2"(12mm)

**Hole Size Required:** 3/4" (19mm)

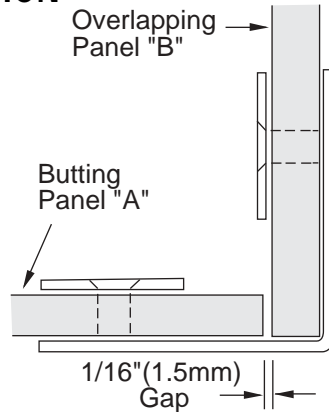
**Includes:** Mounting screws and gaskets



**C.R. LAURENCE CO., INC.**  
PROFESSIONAL QUALITY

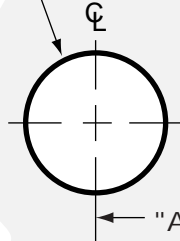
## TYPICAL INSTALLATION

**Important:** Project measurements from the edge of the glass



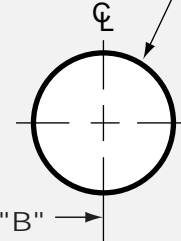
## TEMPLATE OPTION FOR SQUARE CUT GLASS

3/4" (19mm)  
Diameter Hole



Glass Panel

3/4" (19mm)  
Diameter Hole



Glass Panel

Glass  
Thickness

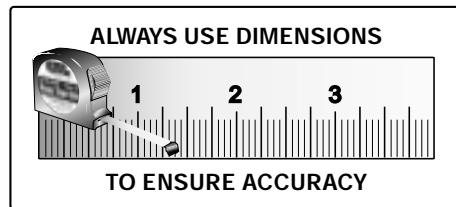
"A"\*  
Measurement

"B"\*  
Measurement

3/8" (10mm)  
1/2" (12mm)

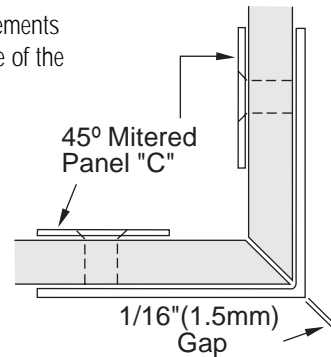
1-3/16" (30mm)  
1-1/16" (27mm)

1-5/8" (41mm)  
1-5/8" (41mm)



## TYPICAL INSTALLATION

**Important:**  
Project measurements from the outside of the mitered glass.



Glass  
Thickness

"C"\*  
Measurement

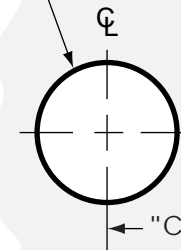
3/8" (10mm)  
1/2" (12mm)

1-9/16" (40mm)  
1-9/16" (40mm)

\*From the Outside Edge of Miter

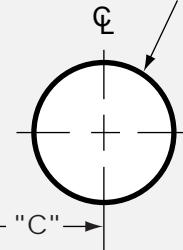
## TEMPLATE OPTION FOR 45° MITERED GLASS

3/4" (19mm)  
Diameter Hole



Glass Panel

3/4" (19mm)  
Diameter Hole



Glass Panel

Outside Edge of Miter

## GLASS CLAMPS

The Template Options on This Page  
Apply to the Following Clamps:

90° Glass Clamp  
(Glass-to-Glass Application)

CAT. No.BGC90

90° Glass Clamp

CAT. No.SGC90