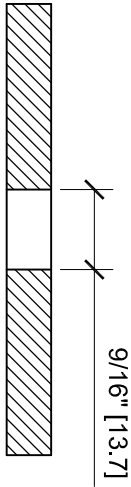
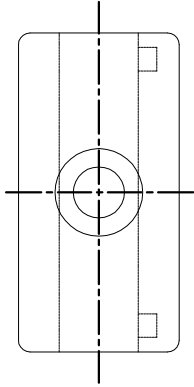
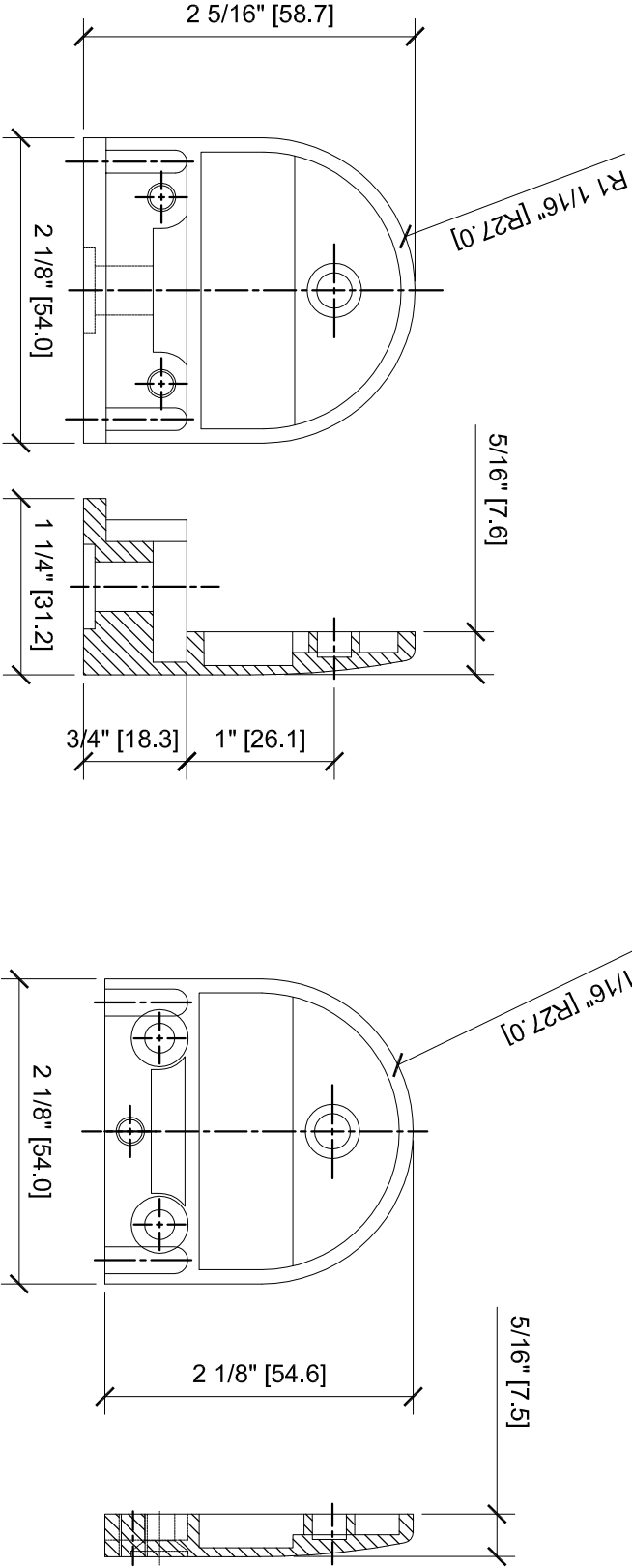
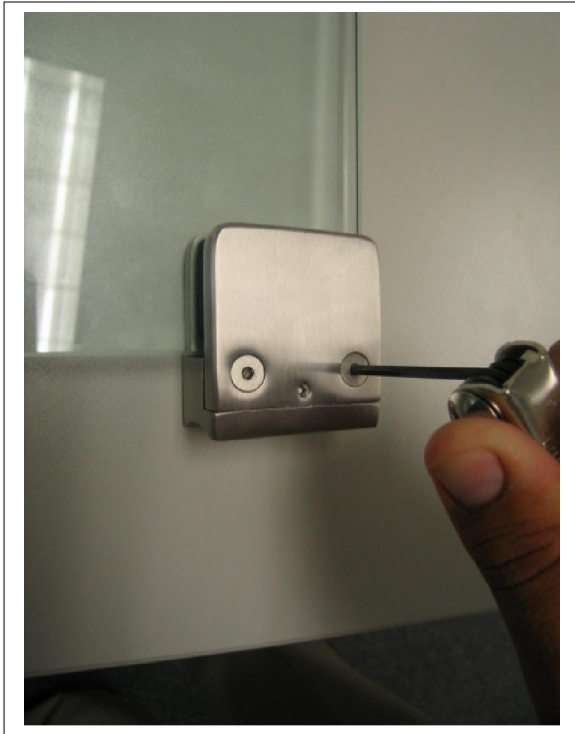


Z-SERIES ROUND TYPE FLAT
BASE ZINC CLAMPS
FOR 1/2" GLASS
CAT NO. Z412XX



GLASS FABRICATION

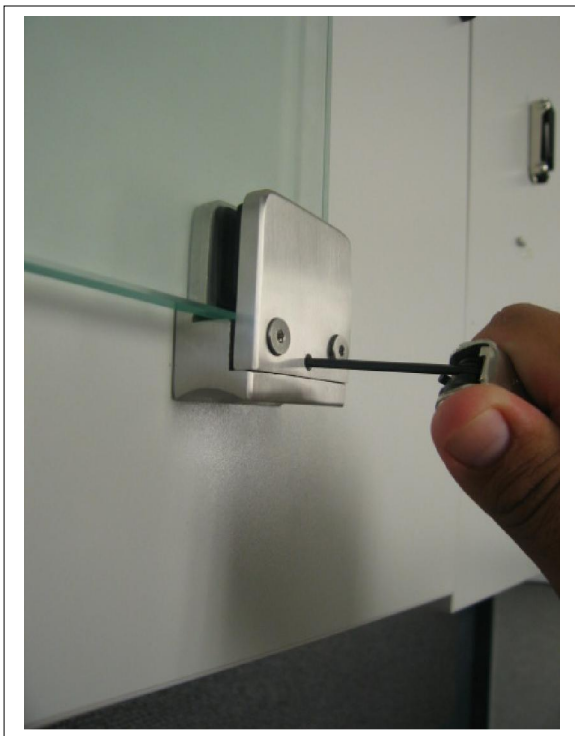
Maximum Clamping Strength Sequence



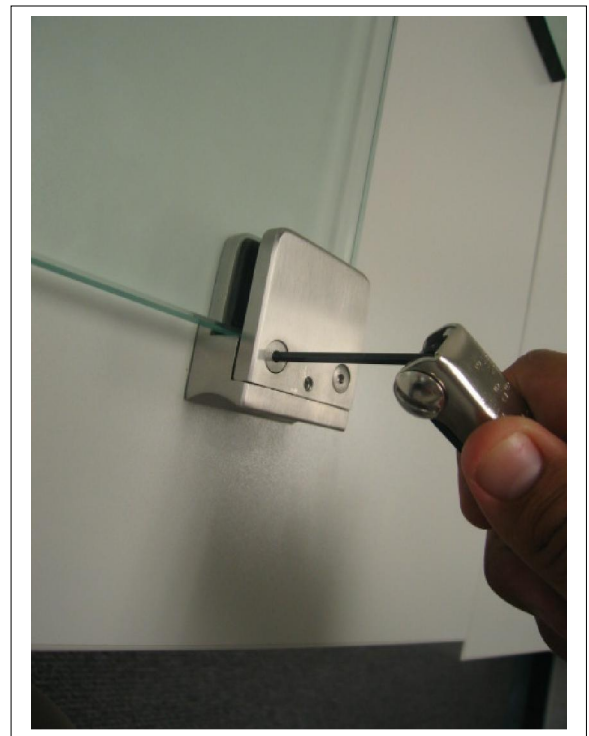
First, loosen the Flat Head Screws



Loosen enough so the Screw Heads project above the Clamp

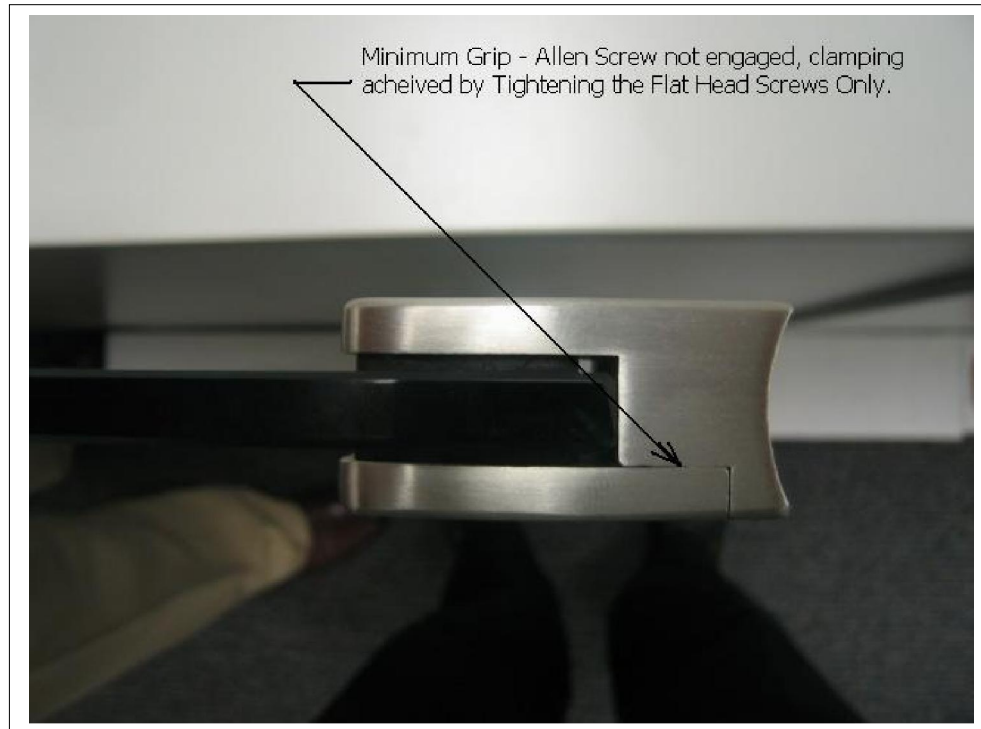


Then slightly tighten the Allen Screw so the Plate tilts at a slant.

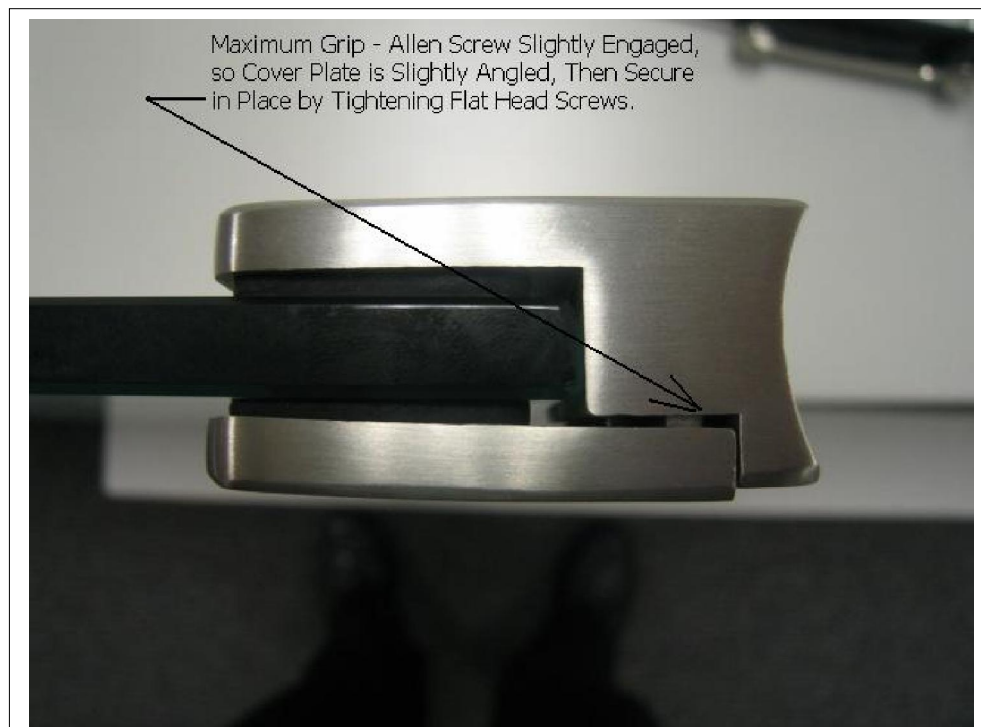


Lastly, secure the Flat Head Screws for Maximum Clamping Strength

Z-Clamp Information



Minimum Clamping Force



Maximum Clamping Force