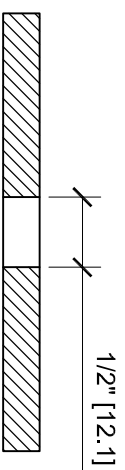
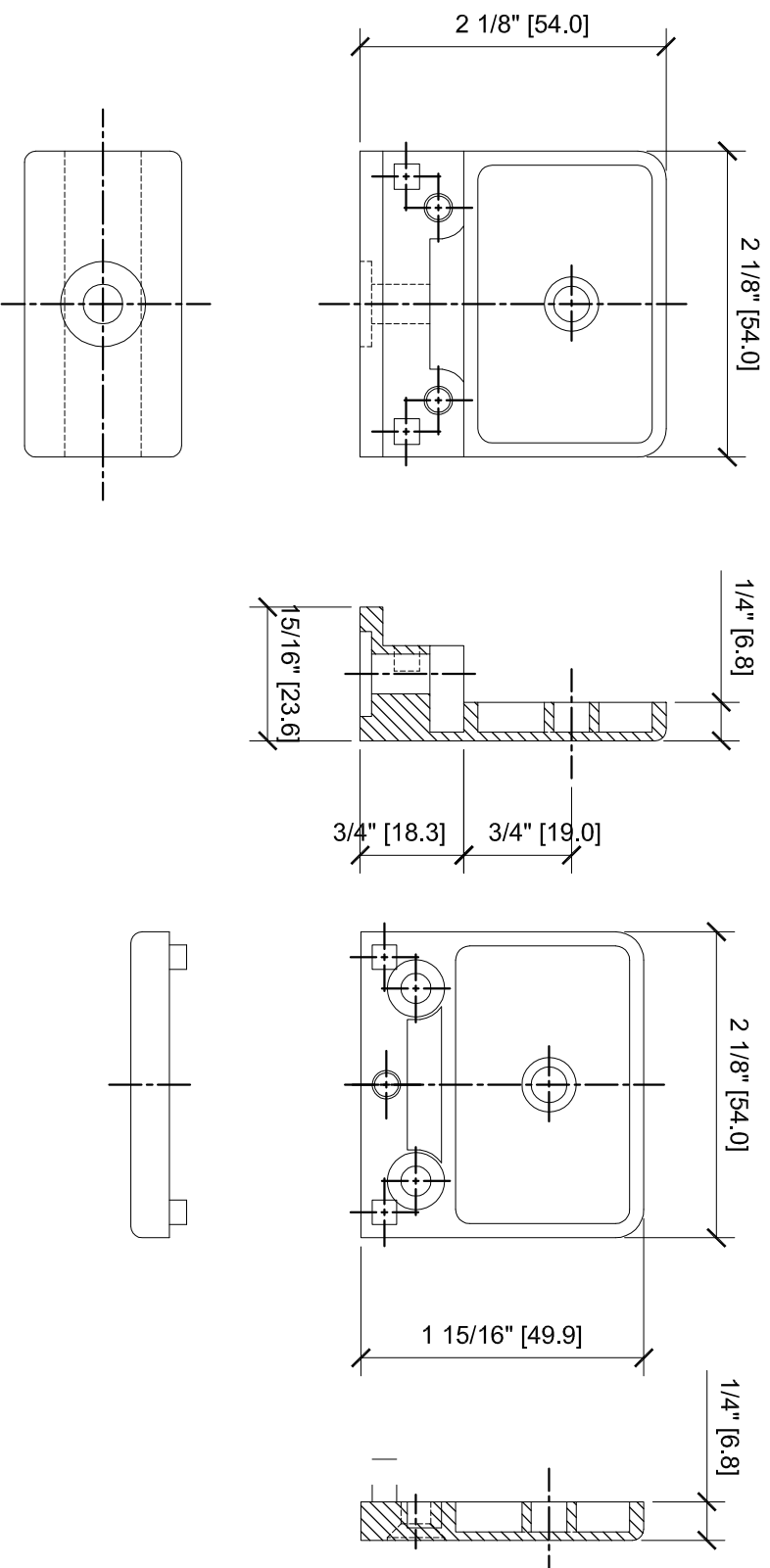
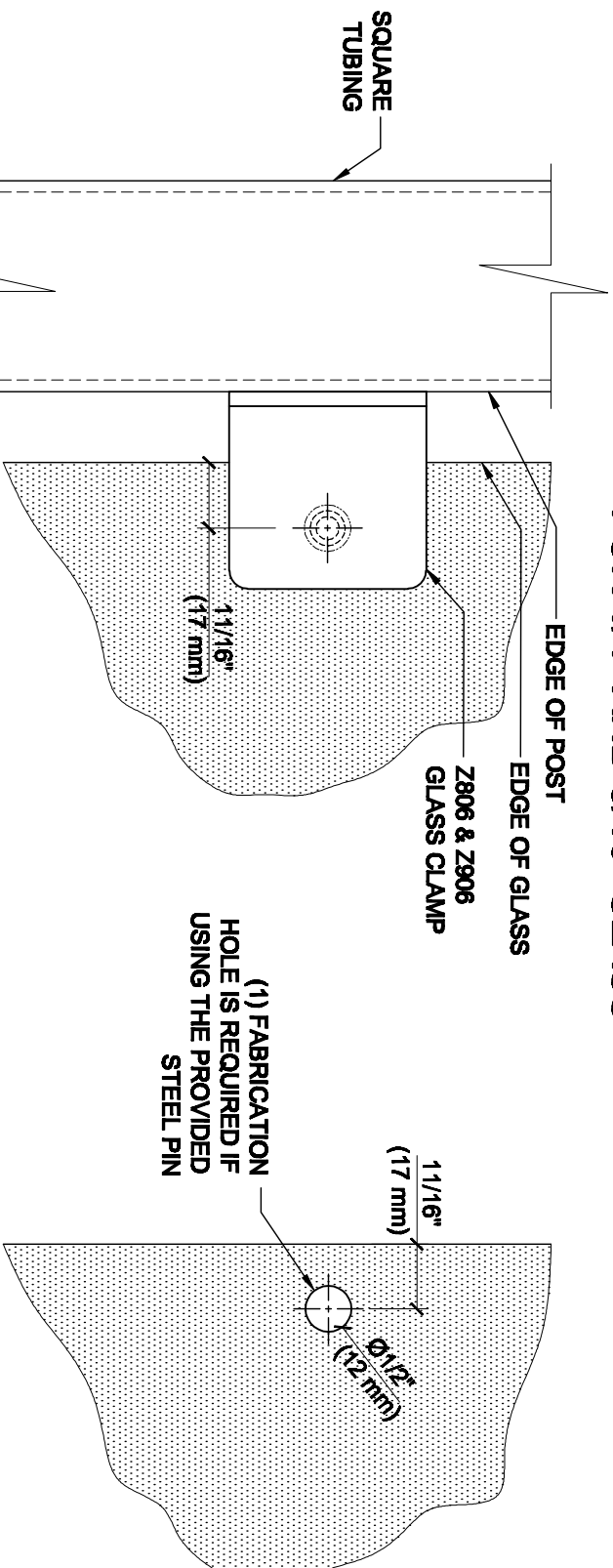


Z-SERIES SQUARE TYPE
FLAT BASE ZINC CLAMPS
FOR 1/4" AND 5/16" GLASS
CAT NO. Z806xx



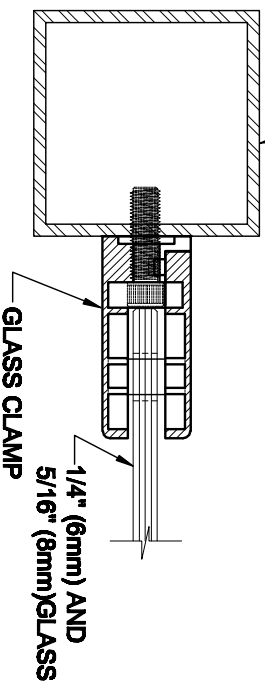
GLASS FABRICATION

GLASS FABRICATION TEMPLATE FOR THE Z-SERIES SQUARE TYPE FLAT BASE CLAMPS FOR 1/4" AND 5/16" GLASS



SQUARE TUBING

CRL'S STANDARD RECOMMENDED (GLASS GAP) BETWEEN POST AND EDGE OF GLASS



ALWAYS USE DIMENSIONS SHOWN ON THE PLAN.
DO NOT SCALE OR DIMENSION ACTUAL DRAWING
TO ENSURE ACCURACY

SPECIFICATIONS:

GLASS THICKNESS: MODELS FOR 1/4" AND 5/16" (6 TO 8 mm) GLASS.

BASE DESIGN: FLAT BACK

FOR USE WITH: SQUARE TUBING OR OTHER FLAT SURFACES.

MATERIAL: CHOICE OF ZINC CONSTRUCTED OR STAINLESS STEEL, STAINLESS STEEL, OR POWDER PAINTED ZINC CLAMPS ARE RECOMMENDED FOR MORE DURABILITY IN EXTERIOR APPLICATIONS.

GLASS FABRICATION: FOR 1/4" (6 mm), 5/16" (8mm), THICK GLASS, 1/2" (12mm) DIAMETER HOLE REQUIRED IF USING PROVIDED STEEL PIN FOR GLASS SUPPORT

INCLUDES: RUBBER GASKETS AND STEEL PIN (FOR OPTIONAL USE) WITH GROMMET.

GLASS FABRICATION TEMPLATE USED FOR:

CATALOG NUMBER

Z806BR

Z806CH

Z806SC

Z806BN

Z806GP

Z806W

Z906BS

Z906PS



ARCHITECTURAL PRODUCTS
Pht: 800-421-6144 Fx: 800-282-3289
WWW.CRLAURANCE.COM

DESCRIPTION:

Z-SERIES SQUARE TYPE FLAT BASE GLASS CLAMP

FOR 1/4" (6mm) & 5/16" (8mm) THICK GLASS

CAT. NO: (SEE CHART)

DATE: 04/16/08

FILE NAME: Z806-Gls Feb

SCALE: N.T.S.

DRAWN BY: R.A.

CHECKED BY: C.H.

SHT 1 OF 1