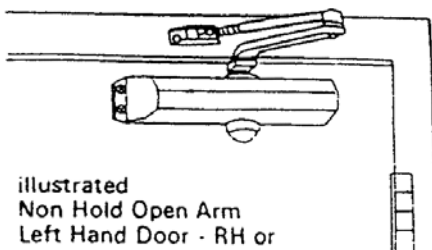


Regular Arm Installation

Closer installs on PULL/HINGE side of door.

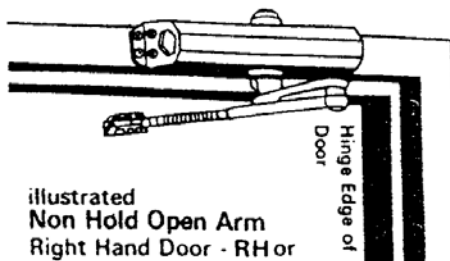


illustrated
Non Hold Open Arm
Left Hand Door - RH or
Right Hand Reverse-RHR

See Page 2

Top Jamb Installation

Closer installs on frame on PUSH/STOP side of door.

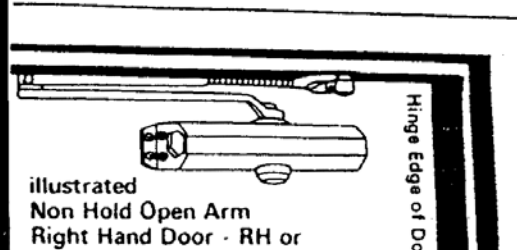


illustrated
Non Hold Open Arm
Right Hand Door - RH or
Left Hand Reverse-LHR

See Page 3

Parallel Arm Installation

Closer installs on PUSH/STOP side of door.



illustrated
Non Hold Open Arm
Right Hand Door - RH or
Left Hand Reverse-LHR

See Page 4

CLOSER ADJUSTMENT

CLOSING CYCLE

NOTE : Closing arcs ("CLOSE" and "LATCH") are controlled by two(2) separate speed adjusting valves adjust the CLOSING speed first, then adjust the LATCHING speed.

- "CLOSING" speed adjustment is accomplished by full rotations of the speed adjusting valve.
 - Turn the speed adjusting valve **CLOCKWISE** for a **SLOWER CLOSE** arc closing speed.
 - Turn the speed adjusting valve **COUNTER-CLOCKWISE** for a **FASTER CLOSE** arc closing speed.
- "LATCH" speed adjustment is accomplished by full rotations of the speed adjusting valve.
 - Turn the speed adjusting screw **CLOCKWISE** for a **SLOWER Latch** arc closing speed.
 - Turn the speed adjusting screw **COUNTER-CLOCKWISE** for a **FASTER Latch** arc closing speed.

CAUTION!! Do not turn speed adjusting valve more than two(2) full turns counter-clockwise from its factory set position, as two speed adjusting valves could become dislodged from the door closer body, resulting in the loss of internal fluid and failure of the device.

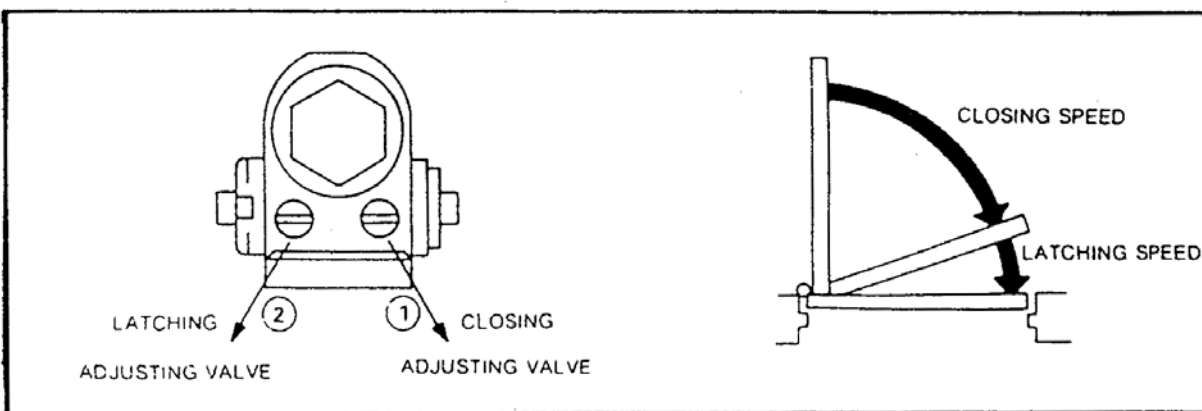


CHART TO DETERMINE HAND OF DOOR

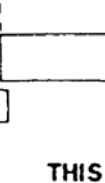
Pull Side of Door



Push Side of Door

THIS IS A LEFT HAND DOOR

Pull Side of Door



Push Side of Door

THIS IS A RIGHT HAND DOOR



Glazing, Industrial, Construction
and Automotive Supplies
Phone Toll Free (800) 421-6144
Fax Toll Free (800) 262-3299

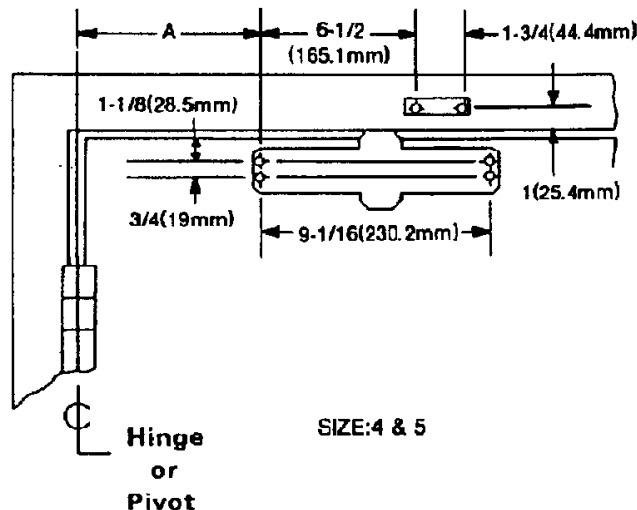
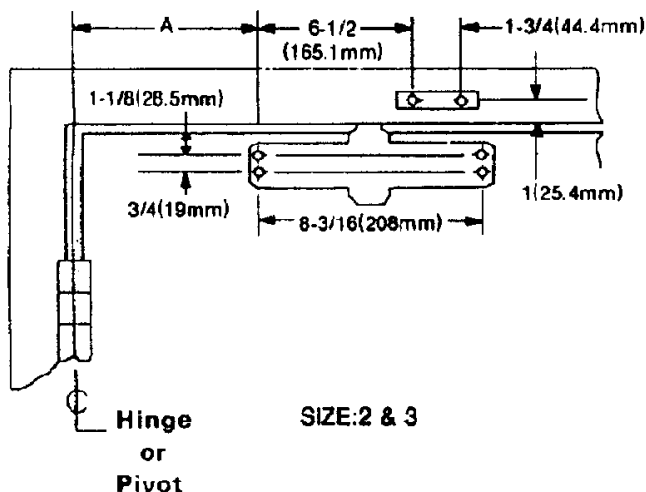
Locations to Serve the Industries
Throughout North America & Europe

Corp. Hdqts: P.O. Box 56923, Los Angeles, CA 90056-0923
Website Address: www.crlaurence.com

Model: DC50 Series
Size : 2, 3, 4, 5.

Installation Instructions for REGULAR ARM(PULL SIDE) Mounting

THIS TEMPLATE COVERS REGULAR ARM INSTALLATIONS TO 180° OPENINGS.



- Right hand door shown
- Left hand door opposite
- Dimensions are in inches
- Do not scale drawing

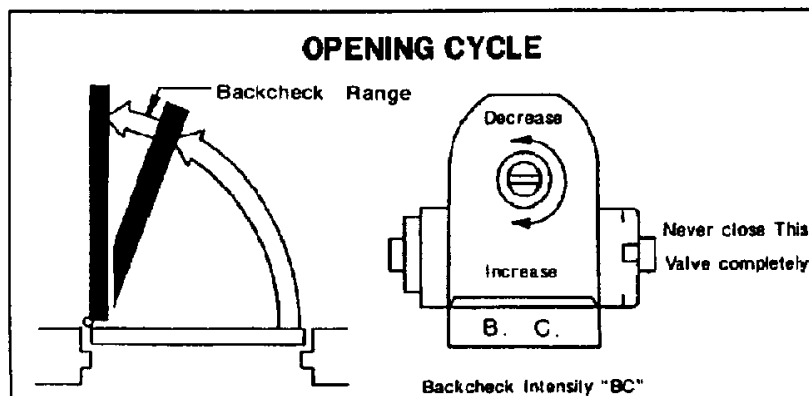
OPENING	DIM. A SIZE: 2 & 3	DIM. A SIZE: 4 & 5
To 120°	6 1/2 (165.1mm)	6 1/2 (165.1mm)
120°-180°	4 (101.6mm)	4 (101.6mm)

INSTALLATION INSTRUCTIONS

1. Select door opening angle and use dimensions shown above, mark four(4) holes on door for door closer and two(2) holes on frame for arm shoe.
2. Drill pilot holes in door and frame for #14 all-purpose screws or drill and tap for 1/4-20 machine screws.
3. Install forearm/arm shoe assembly to frame using screws provided.
4. Mount closer on door using screws provided. SPEED ADJUSTING VALVE MUST BE POSITIONED TOWARD HINGE EDGE.
5. Install main arm to top pinion shaft, perpendicular to door as shown below. Secure tightly with arm screw/washer assembly provided.
6. Adjust length of forearm so that forearm is perpendicular to frame when assembled to preloaded main arm (illustration below). Secure forearm to main arm with screw/washer assembly provided.
7. Snap pinion cap over shaft at bottom of closer.
8. Adjust closing speed of door, following instructions as shown

OPENING CYCLE

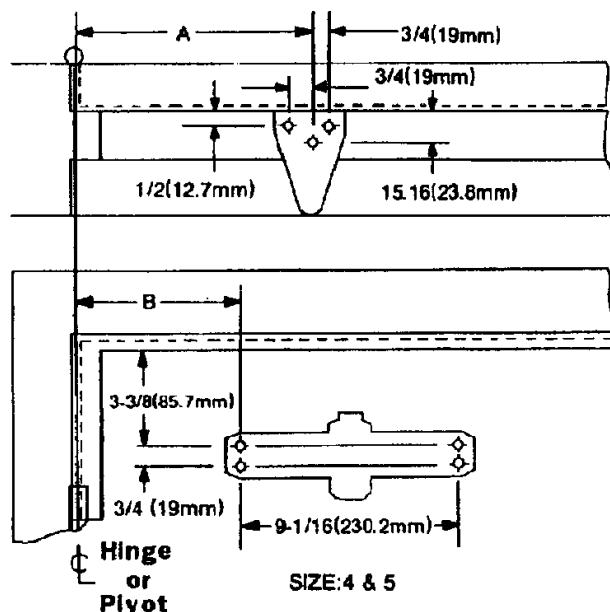
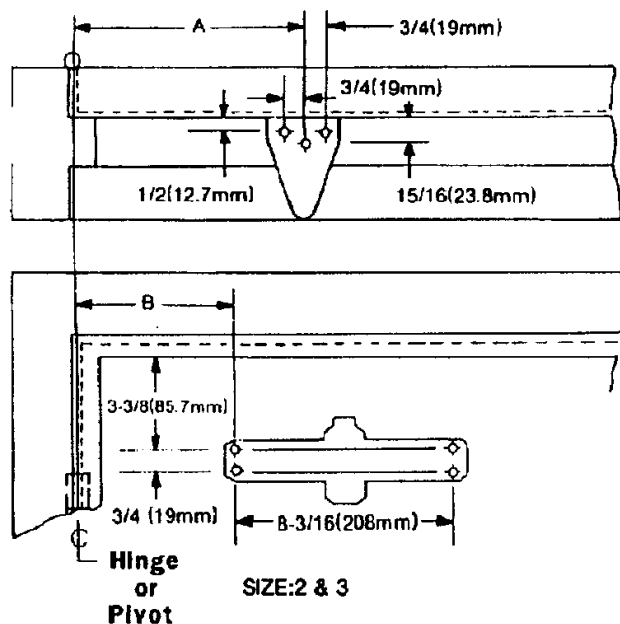
- NOTE: These instructions apply only to closers equipped with backcheck.
- To increase backcheck intensity, turn valve marked "BC" clockwise.
 - To decrease backcheck intensity, turn valve marked "BC" counter-clockwise.



Installation Instructions for PARALLEL ARM(PUSH SIDE) Mounting

THIS TEMPLATE COVERS REGULAR PARALLEL ARM INSTALLATIONS TO 180° OPENINGS.

Parallel bracket accessory required



- Left hand door shown
- Right hand door opposite
- Dimensions are in inches
- Do not scale drawing

INSTALLATION INSTRUCTIONS

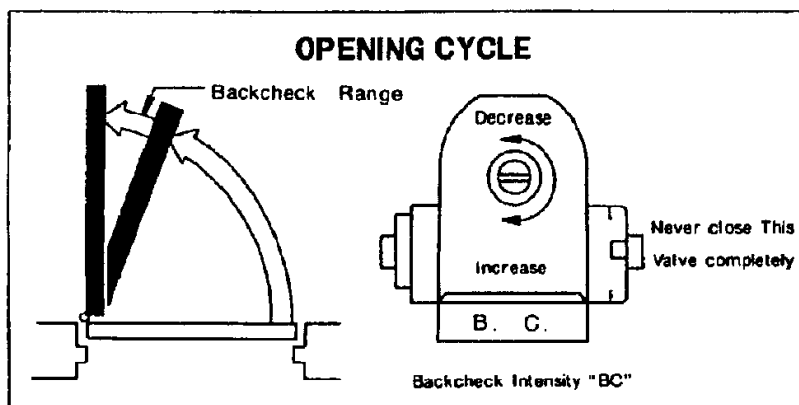
1. Select door opening angle and use dimensions shown above mark four(4) holes on door for door closer and three(3) holes underside of frame for parallel bracket.
2. Drill pilot holes in door and frame for #14 all-purpose screws or drill and tap for 1/4-20 machine screws.
3. Mount closer on door using screws provided. SPEED ADJUSTING VALVE MUST BE POSITIONED AWAY FROM HINGE EDGE.
4. Install Parallel Arm Bracket to frame using screws
5. Using a wrench on the square shaft at bottom of closer, rotate shaft approximately 45° toward hinge edge of door. Hold and place main arm of shaft on top of closer at proper index mark as illustrated. FOR LEFT HAND DOOR "L"(illustration "A"). FOR RIGHT HAND DOOR "R"(illustration "B"). Tighten arm screw with lockwasher securely.
6. Remove arm shoe from forearm and discard. Install ROD end of forearm to bracket using screw/washer assembly provided.
7. Adjust length of adjustable forearm so that adjustable forearm is parallel to frame.
8. Adjust closing speed of door, following instructions as shown Page 1.

OPENING	DIM. A SIZE: 2 & 3	DIM. B SIZE: 2 & 3	DIM. A SIZE: 4 & 5	DIM. B SIZE: 4 & 5
To 120°	10 3/4 (273mm)	7 13/16 (198.4mm)	10 3/4 (273mm)	6 15/16 (176.2mm)
120°-180°	8 3/4 (222.2mm)	5 5/8 (142.9mm)	8 3/4 (222.2mm)	4 3/4 (120.6mm)

OPEN CYCLE

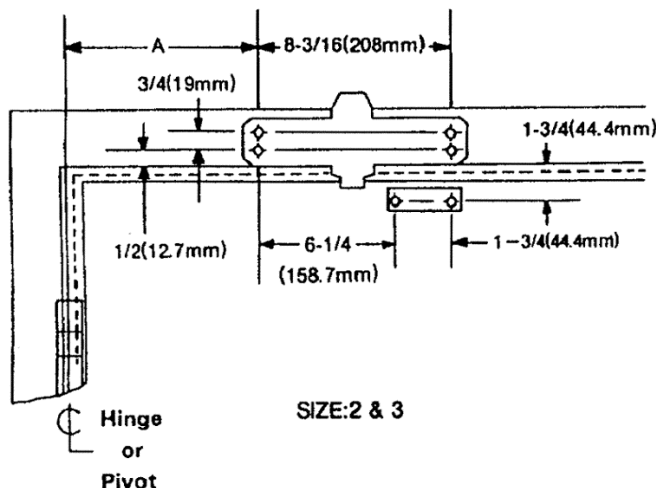
NOTE: These instructions apply only to closers equipped with backcheck.

- To increase backcheck intensity, turn valve marked "BC" clockwise.
- To decrease backcheck intensity, turn valve marked "BC" counter-clockwise.

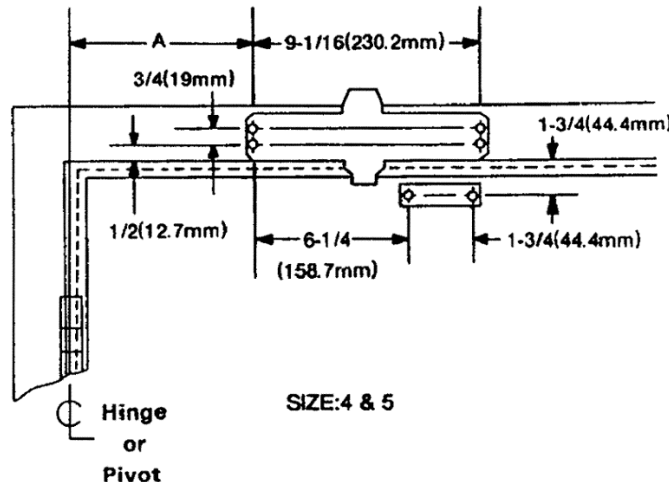


Installation Instructions for TOP JAMB (PUSH SIDE) Mounting

THIS TEMPLATE COVERS TOP JAMS INSTALLATIONS TO 180° OPENINGS.



SIZE: 2 & 3



SIZE: 4 & 5

- Left hand door shown
- Right hand door opposite
- Dimensions are in inches
- Do not scale drawing

OPENING	DIM. A SIZE: 2 & 3	DIM. A SIZE: 4 & 5
To 120°	6 1/2 (165.1mm)	6 1/2 (165.1mm)
120°-180°	4 (101.6mm)	4 (101.6mm)

INSTALLATION INSTRUCTIONS

1. Select door opening angle and use dimensions shown above, mark four(4) holes on frame for door closer and two(2) holes on door of arm shoe.
2. Drill pilot holes in door and frame for #14 all-purpose screws or drill and tap for 1/4-20 machine screws.
3. Install forearm/arm shoe assembly to door using screws provided.
4. Mount closer on frame using screws provided. SPEED ADJUSTING VALVE MUST BE POSITIONED TOWARD HINGE EDGE.
5. Install main arm to top pinion shaft, perpendicular to door as shown below. Secure tightly with arm screw/washer assembly provided.
6. Adjust length of forearm so that forearm is perpendicular to frame when assembled to preloaded main arm (illustration below). Secure forearm to main arm with screw/washer assembly provided.
7. Snap pinion cap over shaft at bottom of closer.
8. Adjust closing speed of door, following instructions as shown

OPENING CYCLE

NOTE: These instructions apply only to closers equipped with backcheck.

- To increase backcheck intensity, turn valve marked "BC" clockwise.
- To decrease backcheck intensity, turn valve marked "BC" counter-clockwise.

